

38th Annual St. Louis Center Memorial Golf Outing



**In remembrance of
Paul Frisinger**



Saturday, August 16, 2025

Pierce Lake Golf Course



2025 Upcoming Events

September 14 Fall Harvest Festival
Italian American Banquet & Conference Center
Livonia

September 19 Randazzo Men's Social
Randazzo Fresh Market
Macomb

November 8 Fall Dinner Auction
St. Mary Parish
Chelsea

**WELLS
FARGO**

Advisors

Ronald Emrick, Senior Financial Advisor, and The Emrick Woodward Mehram Consulting Group of Wells Fargo Advisors applauds the work of The St. Louis Center and is a proud sponsor of St. Louis Center's Memorial Golf Outing.



**The Emrick Woodward Mehram
Consulting Group
of Wells Fargo Advisors**
2723 South State Street
Ann Arbor, Michigan 48104
734-668-4300 Main Office

Investment and Insurance Products:

Not FDIC Insured

No Bank Guarantee

May Lose Value

Investment products and services are offered through Wells Fargo Advisors, a trade name used by Wells Fargo Clearing Services, LLC, Member SIPC, a registered broker-dealer and non-bank affiliate of Wells Fargo & Company. PM-11212026-7991743.1.1



In remembrance of Paul Frisinger

Paul was a successful realtor and avid supporter of St. Louis Center. He owned his own agency, Frisinger Realty, and was named Realtor of the Year in 2003 by the Ann Arbor Board of Realtors. After retiring, he was active with many area organizations, including the St. Louis Center Community Advisor Council.

Paul and his wife, Kathy, enjoyed attending and volunteering at numerous St. Louis Center events. They were able to explore many corners of the globe together. He also enjoyed gardening, woodworking and classic cars. His talents and expertise knew no bounds, and it is our pleasure to honor and remember him today.

- Schedule of the Day's Events -

8:00 a.m.

Registration
Catered Breakfast
Angel Food Catering

9:00 a.m.

Shotgun Start

10:30 a.m.

Lunch—Hot Dogs, Chips, Pop, Water
*Pavilion at Turn

2:00 p.m.

Scorecards **MUST BE** turned in at Pavilion to be eligible for prizes

After Golf

Dinner—Italian Sausage, Hamburgers, Assorted Salads
Beer, Pop, Water

Program:

Golfing Awards
Yeti Drawing
50/50 Drawing



Thank you for your
Hole-in-One Sponsorship!

GOLLING



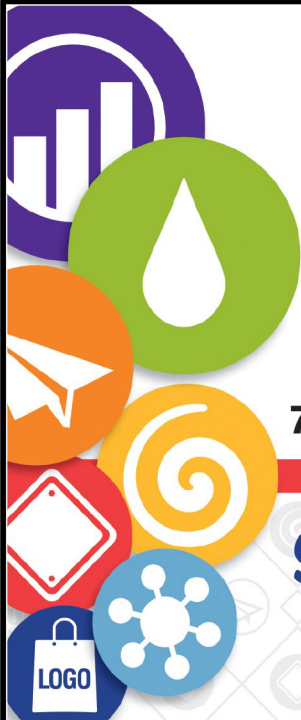
DODGE

Jeep



CHELSEA

**1185 S Main St
Chelsea, MI 48118
(855) 715-2999**



ALLEGRA®

MARKETING • PRINT • MAIL

734.944.1404 • www.allegra.net

**Serving the Community
Since 1973**

PRIME CUTS

1821 Horton Rd
Jackson, MI 49203

(517) 768-8090



the PARTS PEDDLER
AUTO SUPPLY STORE



734-475-9106



LALLY
group

*Empowering
Business Leaders
with
Financial Confidence*

Offices in Jackson & Lansing

lallycpa.com

2025 Prize and Game List

Golf Plaques for 1st and 2nd place teams

Hole Prizes

8th Hole	Longest Drive—Men
10th Hole	Longest Drive—Women
2nd Hole	Closest to Pin—Senior +65
7th Hole	Closest to Pin—Men
12th Hole	Closest to Pin—Women
18th Hole	Longest Putt

Betting Holes

18th Hole— Bet \$5, \$10, \$15, or \$20.
Double your money for shot within 25 ft of hole

7th Hole— Bet \$5, \$10, \$15, or \$20.
Double your money for shot within 15 ft of hole

Hole-in-One

Golling Chrysler, Dodge, Jeep RAM of Chelsea
2025 Jeep Compass for a Hole-in-One on the 18th Hole

Mulligans

\$10 each - Limit 5 per golfer

Yeti Cooler Drawing

\$5 each or 5 for \$20. Tickets available at registration & pavilion

50/50

\$5 each or 5 for \$20. Tickets available at registration & pavilion

Rules of Play Four Person Scramble

1. **Men Tees: Blue** Seniors Over 65: White **Women +80 Tees: Red**
2. Groups with less than four players are entitled to four shots, but must rotate the shots and putts.
3. Tie Breaker will be based on team scores for most difficult holes in handicap order
4. YOU MUST TURN IN YOUR SCORE CARD BY 2PM TO BE ELIGIBLE FOR ANY GOLF PRIZES
5. If no player's tee shots clear the wetland areas, team should drop on green side of wetland for next shot
6. Local Rule: **DO NOT** enter wetland areas!

SPECIAL THANKS TO OUR:

GOLD SPONSOR

The Nadeau Family

SILVER SPONSOR

Bank of Ann Arbor

BRONZE SPONSOR

Allegra Print Mail Marketing

Hobey & Valerie Bates

In Memory of George Merkel

In Memory of Nancy Merkel

William A. Lamb, PLC/Elder Law of Chelsea

Representative Kathy Schmaltz

DINNER SPONSOR

Robert's Paint & Body



**Thank you to
Polly's Country Market and the
Kennedy Family
for your continued support of the
St. Louis Center
Memorial Golf Outing.**



"We meet the nicest people by accident."

ROBERTS

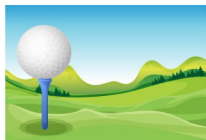


PAINT & BODY

www.robertspb.com

Tel: (734) 475-1149

Hobey & Valerie Bates



**Proud Sponsors of the
38th Annual Memorial
Golf Outing**



WILLIAM A. LAMB, PLC

**ELDER LAW OF CHELSEA &
CHELSEA ESTATE PLANNING**

**300 N. Main St., Suite 1
Chelsea, MI 48118
(734) 475-2100**

HOLE SPONSORS

Brad & Roxanne Angelocci
Cardinal O'Hara Assembly, No. 0489
Champagne Daze
Chelsea State Bank
Grohnert & Grohnert Law Office
Irish Hills Council, No. 6223
Jeff Klink & Associates
Lally Group
Main & Company
Merkel Home Improvements
In Memory of Gerald Miller
St. Francis Camp
St. Louis Center Family Association
St. Louis Guanella Council, No. 3092
Silveri Architects
Simon Building Company

DONORS & IN-KIND CONTRIBUTORS

The Emrick Woodward Mehram
Financial Consulting Group
John & Jennie Maynard
The Nadeau Family
Parts Peddler-Chelsea, Inc.
Pierce Lake Golf Course
Polly's Country Market
Prime Cuts
TaylorMade
Washtenaw County Parks & Recreation
Joe & Denise Yekulis

THANK YOU!
thank you!

**To all the people who made
this day possible!**

Joe Yekulis, Chair
Fr. Satheesh Alphonse
Fr. Franklin Michael
Hobey Bates
Charlie Benoit
Shawn Benoit
Richard Biggs
Peggy Cole
Barb Duca
Chuck Duca
Richard Ellison
Carla Fields
Sheila Fitzgibbons
Kelly Flaherty
Michael Franklin
Kathy Frisinger
Karinna Hershberger
Rich Hollo
Tyrin Johnson
Cindy Lesser
Jennie Maynard
Linda Recca
Pat Valaer



The Family of
George and Nancy
Merkel

would like to thank you
for your support of the
St. Louis Center
Memorial Golf Outing



Thank you to the
Nadeau Family
for always going above and
beyond in support of
St. Louis Center,
especially for the
38th Annual
Memorial Golf Outing.



You are truly appreciated!

In Remembrance of Past Memorial Golf Outings

2001	<i>Kevin George</i>
2002/2003	<i>Robert Fitzgibbons</i>
2004	<i>Barbara Phelps</i>
2005	<i>Jerry Gondek</i>
2006	<i>Herman Koenn</i>
2007	<i>Lloyd Bridges</i>
2008	<i>Martin Merkel</i>
2009	<i>Susan Starkey</i>
2010	<i>Robert Gorse</i>
2011	<i>Hal & Peg Pennington</i>
2012	<i>Therese Doll</i>
2013	<i>Joseph Merkel</i>
2014	<i>Mary Powers</i>
2015	<i>John “Bob” Moody</i>
2016	<i>Alice D’Adamo</i>
2017	<i>Larry Kranick</i>
2018	<i>Douglas Nadeau</i>
2019	<i>Patrick Cunningham</i>
2020	<i>Jerry D’Adamo (virtual event)</i>
2021	<i>Jerry D’Adamo</i>
2022	<i>Ann Merkel</i>
2023	<i>Liz Hollo</i>
2024	<i>George Merkel</i>

St. Louis Center
Community Advisory Council

Joseph Munie, Chairperson

Donna Hrozencik, Secretary

Glenn Johnson, Treasurer

James Kennedy

Kenneth Klovski

William Lamb

George Mallison

Kathi Neuman

Norm Neuman

Juanita Pampuch

Jerry Ruggirello

Rosalie Tocco-Bradley

Mark Umlauf

Donald Walker

George Walrath

Victoria Walrath

Ex-Officio Member

State Deputy Barry Borsenik

Knights of Columbus





STATE REPRESENTATIVE

KATHY SCHMALTZ

Proud to support the
Saint Louis Center
and our
Chelsea community.

Please contact me
if I can be
of any assistance!

517-373-1798
KATHYSCHMALTZ@HOUSE.MI.GOV

**bank^{of}
ann arbor**

**125 S Fifth Avenue
Ann Arbor, MI 48104**





thank
you!

**To all the supporters of the
38th Annual St. Louis Center
Memorial Golf Outing**

From:

**The Residents, Staff,
Family Association,
Community Advisory Council
and the Servants of Charity**



**St. Louis Center
16195 W Old US Hwy 12
Chelsea, MI 48118
(734) 475-8430**