



St. Louis Center serves individuals with intellectual and developmental disabilities in an intentional, faith-based community.

St. Louis Center 2018 ANNUAL REPORT



Blessings to all!

2018 has been a year full of blessings for St. Louis Center. The Good Lord, who cares for His precious people, has blessed the Center in many wonderful ways.

June 12, 2018 was the grand opening of the first four houses in St. Louis Guanella Village. Four hundred people experienced the palpable joy during the celebration. Project donors, parents, and the residents were excited to finally see the finished homes. The new St. Louis Guanella Village logo was also unveiled.

In the following months, the children moved into their new homes, and at the end of November, girls under the age of 18 became part of the SLC program for the first time. By the end of the year, the enrollment was up to 68 residents.

The Legacy Campaign has raised the first \$10 million for the construction of the Village, and a new committee has been formed to raise the funds needed to complete the Village project. This committee is also reviewing the operational budget, the capital repair expenses of the existing buildings, and the endowment trust fund for benevolent care and support.

Plans are underway to continue the construction of new homes for adults with intellectual and developmental disabilities as well as housing opportunities for families who wish to live near their loved ones.

The Center received a major grant from the Michigan Health Endowment Fund for the



formation of staff and interested individuals from the larger community to learn how to support people with intellectual and developmental disabilities and dementia.

Many people have embraced the Center as part of their life. A particular family I want to thank is the Walt and Monica Horodecny family, who for many years has answered our phone calls at any time of the day or night and has come to take care of emergency maintenance needs. It truly is a blessing to be able to count on people like them!

Many people visited the Center, interested in the new vision it's bringing into the human services field. These included MDHHS Director Nicholas Lyon and staff; Sen. Stabenow's office staff; Sen. Mike Shirkey; Rep. Lana Theis; Rep. Julie Alexander; Fr. Umberto Brugnoli, Superior General of the Servants of Charity; and Bro. Franco Lain, member of the General Council of the Servants of Charity.

The Community Advisory Council grew in size in 2018. I say 'thank you' to the new members and to those members who were involved with the Center in the past and helped foster its sustainability.

Volunteers organized another 'Dream Cruise' last September, which was

very profitable for the Center's Legacy Campaign. Many other volunteers worked very hard to raise funds for the benevolent care offered by the Center. I want to thank all of them for going the extra mile in taking care of these financial needs.

Maria 'Toni' Tocco has gone back to the Father's house. She was a loving and generous woman whose legacy lives on among her family members, who have taken a leading role in financially supporting the Center. We want to remember her and say thank you to her and the entire Tocco family.

Fr. Enzo Achilari

**Many thanks to all of you
for your involvement in
the Center during 2018.
Your generosity is always
a blessing from God to
His beloved children and
adults with intellectual and
developmental disabilities.**

Maria 'Toni' Tocco



VILLAGE GRAND OPENING: A New Beginning for Residents of St. Louis Center

“... Every child is a special gift. Every person is special. Every person is different. Every person deserves the opportunity to be happy and healthy ..”

-Wendell Dunbar
President, Harry A. and Margaret
D. Towsley Foundation
at SLGV Grand Opening

The formal dedication of St. Louis Guanella Village and the grand opening of four new children's homes for children with intellectual and developmental disabilities took place on the grounds of St. Louis Center on Tuesday, June 12, 2018. Each children's home has five bedrooms, a kitchen, a modern dining room, living room, sensory/play room, laundry room, and caregiver work areas. The homes feature soft, natural color palettes, full spectrum LED lighting in each room and plenty of natural lighting.

A thanksgiving Mass was celebrated by Very Rev. Bishop Emeritus Carl F. Mengeling of the Lansing Diocese along with ten priests from the Servants of Charity and the local community. After Mass, supporters proceeded to the new St. Louis Guanella Village to hear words of welcome from Fr. Enzo Addari. Fr. Joseph Rinaldo gave a history of St. Louis Center and Fr. David Stawasz unveiled the new St. Louis Guanella Village logo. Legacy Campaign Chairman Norm Neuman thanked everyone who helped bring the vision of the St. Louis Guanella Village to fruition. Additional presenters included Alex Strati of Old National Bank, Wendell Dunbar, President of the Towsley Foundation, Christine Lindemann, sister and guardian of a SLC resident, and State Deputy Kenneth Unterbrink of the Michigan Knights of Columbus. Bishop Mengeling and Fr. Enzo cut the ribbon to officially open the Children's Homes, and then Bishop Mengeling blessed each home.

The event also included performances by Ballet Chelsea, a local non-profit dance company, and Company C, a group of talented Chelsea High School students. Every person in attendance was astounded at the beauty of the homes. The rain wasn't able to dampen the joy that permeated the celebration.

“I'm just so thrilled, and I realize that SLC can give my brother a life that I never could... They have the vision and fortitude to build an incredible village like this and make sure that Todd lives in a community where he is loved and supported even more than he already is.”

-Christine Lindemann, sibling of SLC resident
at SLGV Grand Opening

“Save room for joy, because
joy is here and it's wonderful.”

-Judy Dow Rumelhart at SLGV
Groundbreaking





“We are working hard to increase the acceptance of the residents in the wider community ... and I think we are doing a good job.”

-Stephany Muszynski

SOCIAL WORK

More Than Just Advocacy

The Social Work staff at St. Louis Center plays a vital role in the everyday operations of the Center. Stephany Muszynski heads the department which includes five employees, Linda Callendar, Debra Pollard, Stephanie Lyerla, and Gary Piper. According to Stephany, their mission is "to advocate for the residents to be independent, and to allow them to have as much control over their lives as possible. Our primary duties include, person-centered planning (PCP), behavioral plans, counseling residents through their issues, and scheduling appointments."

Everyone works together with defined roles. "The social workers' duties are all the same. We each carry a caseload, and I have to make sure that all the reports get in on time. Stephanie Lyerla is a Social Worker Assistant and Referral Specialist who keeps track of when reviews and PCPs are due. She also schedules referral tours for potential residents, makes appointments with doctors, dentists and specialists, and keeps track of the family integration schedule. Gary Piper is the new Transporter who takes residents to and from their appointments and assists the Nursing Department when they need help."

Stephany describes the relationship they have with the residents as the key to their success. "We get so close to them that we think of them as our close friends or family members. I think that helps, because if you can read them and see that something is wrong, because of the trust we've built, they will usually open up and tell us. That helps us to develop plans for them and provide them with the services they need a lot faster and with much less error."



Gary Piper, SLC Transporter

12

Average Transports Per Day

The Social Work Department spends many hours and miles on the road taking residents to appointments, jobs, school and shopping.



5

Agency Vehicles to Transport Residents

Vans are used to take groups on outings and cars are available for transporting individuals.

LEARNING BEYOND HIGH SCHOOL

Chelsea Young Adult Program Director Tom Osbeck opened up about his eight years of managing the program in Chelsea for the Washtenaw Intermediate School District and St. Louis Center's involvement. "Our main goal is to help our guys who are past high school age, between 18 and 26, to become more functional and active in their life after high school," said Osbeck. "Michigan allows us to provide services for our folks until age 26, so most of our emphasis is on vocational work. During the course of the week, I've got people going to many different work sites, and that's the ultimate goal, teaching them how to work."

"We want them to be as independent as they can be, recognizing that they will be dependent on other people and supports, too. Our critical objectives are to be a productive worker, to be literate; since some of our guys communicate adaptively, to receive information and learn how to express ourselves, to be an involved citizen and give back to the community, and to be a healthy person in the family, whether at SLC or at home."

Osbeck discussed the changes in the program since he arrived. "We moved to downtown Chelsea to be a part of the life of the community. In my time here, we've probably had 15 students from SLC; this year we have Tony, Ray and Jeremiah. They're all special."

"When I get a new student, I have to connect with him or her. It's not always easy, but there's no shortage of being loved here, because they show that they appreciate you when you give them your time. They've come a long way. We've developed a neat working relationship with the people of SLC throughout the years, and I appreciate the effort that's put into these young people It's very meaningful and it's a relationship that we've had to build between us, because we're all on the same team."



SLC Residents Enrolled in Washtenaw Intermediate School District Programs

5	High Point, Ann Arbor	1	Dexter High School
4	Red Oak Young Adult, Ann Arbor	1	Milan Middle School
3	Chelsea Young Adult	1	Progress Park, Ann Arbor
2	Chelsea High School	1	South Meadows Elementary, Chelsea
2	North Creek Elementary, Chelsea		
1	Beach Middle School, Chelsea		

SPECIAL NEEDS. SPECIAL GIFTS: PARABLES

After graduating from seminary in 2015, Rev. LeAnn Seto was seeking direction for her future ministry when she attended a preaching seminar in Columbus, OH. She was inspired by a 'traveling sensory service' designed for persons with special needs.

When she returned to Chelsea, she reached out to Rev. Joe Jeffreys, Pastor at First Congregational Church in Chelsea. As it turns out, Rev. Joe had been watching the students in the Chelsea Young Adult Program every day from his office window when they were arriving for their classes. He heard God say to him, "How long are you going to let those people walk by My church?" So Rev. Joe and Rev. LeAnn got to work right away, searching for a way to offer a service for persons with special needs. That is when they found "Red Fish Theology" on the United Church of Christ website, an active ministry in Wayzata, MN.



Rev. LeAnn made the trip to MN and knew immediately that this was what the Lord had called her to do, and Rev. Joe was fully supportive. After looking at other

ministries, Rev. LeAnn launched her version of Parables on June 25, 2017. It has been a true blessing to many people including SLC residents.

Parables has grown from a twice a month worship service to a weekly service and even includes programming on two Thursdays a month for the WISD Chelsea Young Adults during school hours.

"I cannot explain to you to the degree I wish I could how absolutely critical it is to our community that [SLC residents] are here, because they create a generosity of heart and a spirit of acceptance and non-judgment that people are so starved for in our world."

-Rev. LeAnn Seto
Minister of Inclusion
Chelsea First Congregational Church

In 2018, Parables Participation was offered to SLC Residents

12
Weeks

Attendance each session averaged

13
People



HOME AT LAST: THOMAS SCHUMACHER

"I have only positive things to say about St. Louis Center. On a Sunday, the family came to SLC to pick Thomas up for a birthday lunch. His relatives made remarks about how cheerful and talkative Thomas was! He communicated things so well and volunteered information to us. He was talking about a game he attended and let us know that his team had won He seems so much more relaxed and comfortable since coming to SLC. [Placement at SLC] really was the answer to my prayers, and I am so happy that he fit in so quickly. He really seems to be in his niche!"

-Dorothy Thompson

"Thomas is extremely caring and considerate of others. He is very punctual and thrives on routines. He has become so much more patient since he has lived at SLC."

-Tiffany Blanchard
Direct Care Professional
St. Louis Center

St. Louis Center Family Association

The families and guardians of SLC residents meet monthly to keep up on legislation and SLC activities.

.....



A STORY OF GROWTH: STEPHON GHOLER

If you'd like to meet someone with a smile as wide as the Grand Canyon, then Stephon should be the next person on your list. Stephon is a resident of St. Joseph Hall and has been living at St. Louis Center for eleven years. His favorite thing to do at the Center is to go on outings that involve music and dining with others. He loves going to Chelsea's Sights and Sounds during the summer and enjoys listening to pop, hip-hop, rap, R & B, rock and country music. Stephon's favorite food is barbecued or fried chicken.

When it comes to his best friends at St. Louis Center, Stephon can't name just one because "they're all my best friends. I don't have just one." His proudest moment in life was his graduation from the Liberty Young Adult Program through the Washtenaw Intermediate School District in 2018. He now works at Chelsea High School as a dishwasher and says, "I enjoy the money and the people. They're very friendly and they help me out when I need help. I work two hours a day, five days a week from 11 am to 1 pm."

His dream for the future is to someday live on his own.



Western-Washtenaw Area Value
Express or WAVE transports:

5x
Weekly

- Stephon - SLC to Chelsea
- Linda - Chelsea to Ann Arbor
- Joe - Chelsea to Ann Arbor



SMILING AND SWAYING: MATT BACHORSKI

Over 56 years ago, a special boy named Matthew was born to Hank and Cecilia Bachorski at Zieger Hospital. Matthew suffered from a rare metabolic disease that kept him from breaking down protein. Matthew was lovingly raised by his parents and his two sisters, Evelyn and Diane. His father was his “best friend,” and as Matthew grew in size and strength, his father would take him for long walks in their Redford neighborhood. He loved music and would spend time in Evelyn’s room upstairs listening to her “Chicago” records and swaying to the music.

Hank died in 2010. Then in December 2011, Cecilia suffered a slip and fall accident at home and fractured her femur. This left Evelyn and Brian Bowman and Diane and Ray Kaszuba in charge of Matthew’s care. Desperate for help, they turned to St. Louis Center. “Our Catholic faith is very important to us,” said Evelyn, “and we had been doing research on St. Louis Center five years before

“There’s just something special about this place. The family and religious aspect, the professional staff, the help from the kitchen for Matt’s special diet; there’s something else that guides the mission here.”

-Evelyn Bowman

26% of St. Louis Center Adult Residents
Have lost both of their parents

16% of St. Louis Center Adult Residents
Have parents who are beyond the age of retirement.

this happened. The urgency of the situation led us here at the end of 2011. When we entered the building, we felt very welcomed by everyone we met and began the registration process right away. That led to a series of successful intake meetings, and Matthew was admitted to SLC in January 2012.”

“When Matthew was given his room in K of C Hall, the other guys made him feel special. He felt accepted right away, and when he turned to us and gave us a ‘thumbs up,’ we knew we had made the right decision.” Brian continued, “We’ve been very pleased with the decision to bring Matthew to SLC. This experience has exceeded our expectations.” Cecilia left this earth in 2013 at peace, knowing that Matthew was being cared for in a safe and loving place.

St. Louis
Center
by numbers

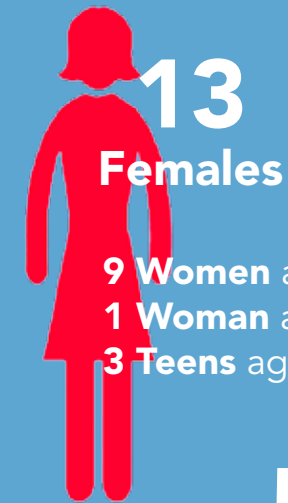
2018 Resident Demographics



Counties of Origin

Barry	1	Newaygo	1
Eaton	1	Oakland	1
Ingham	1	Ottawa	1
Jackson	4	Saginaw	1
Kent	1	Van Buren	1
Lenawee	1	Washtenaw	32
Livingston	1	Wayne	18
Macomb	2	Out of State	1

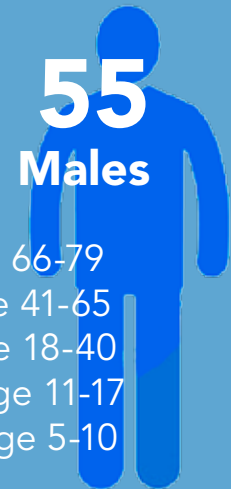
GIRLS PROGRAM: A CONTINUUM OF CARE FOR EVERYONE



9 Women age 41-65

1 Woman age 18-40

3 Teens age 11-17



3 Men age 66-79

13 Men age 41-65

27 Men age 18-40

10 Teens age 11-17

2 Youth age 5-10

St. Louis Center has now been providing care for persons with intellectual and developmental disabilities for 59 years, beginning with minor boys in 1960. As standards have changed in residential care, SLC has continued to raise the bar and adapt to the needs of its residents. The latest innovation is the addition of minor girls into the program.

In November 2018, the fourth children's home in the Village officially welcomed its first two minor girls.

RESPIRE CARE: TROY BLANCHARD

Troy lives at home with his family and attends Dexter Community Schools. His parents have chosen respite care at St. Louis Center on weekends to assist in his transition to independent living when he becomes an adult. They want him to be engaged in activities both at SLC and in the community.

It has been a year since they began respite care, and Troy is slowly becoming more comfortable with the transition to community living, but still struggles with separation anxiety. Dana, Troy's mother, is very thankful for the excellent care her son receives. She says, "When he's at home, he wants to go to SLC; when he's at SLC, he wants mom and dad." Dana loves her son very much and is hopeful that he will be successful living in the community.

What is Respite Care?

Respite care services are designed to offer families the opportunity for a break from caregiving responsibilities.

Respite care is offered for a few hours once or twice a week, for a weekend, a couple of days during the week, or longer.

St. Louis Center Provides Respite Care

52

weeks/year



"I wish I would have known about
[respite care] years ago. In hindsight, I
would have done this sooner."

-Dana Blanchard

St. Louis Center

by numbers

2018 Audited Financials*

St. Louis Center's financial statements
for the fiscal year July 1, 2017 - June 30, 2018

Support & Revenue	2018
Program Service Revenue	\$3,575,581
Fundraising & Grants	\$1,394,028
Other	\$55,135
Total Support & Revenue	\$5,024,744

Expenses	2018
Program Services	\$3,895,237
Management & General	\$793,762
Fundraising Projects	\$362,642
Total Expenses	\$5,051,641
Depreciation	\$268,025
Grand Total Expenses	\$5,319,666

*Figures are based on Audited Financial Statements and do not include Legacy Campaign donations or expenses.

LEGACY CAMPAIGN: Vision for the Future

St. Louis Center has reached its Legacy Campaign fundraising goal of \$10,000,000 thanks to the generosity and support of over 500 private individuals, foundations, corporations, businesses, and organizations. The Campaign was announced in 2010 and fundraising began in earnest in 2011. This Campaign was the first formal fundraising campaign in St. Louis Center's history.

What has resulted from your generosity is positive and lasting change, innovation in the delivery of housing and services to people with intellectual and developmental disabilities, and renovation, new construction, partnerships and friendships.

Thanks to all of our supporters, we are carrying out our visionary goals while also maintaining annual sustainability.

THE LEGACY PROJECT: Progress Report

Making a life commitment to people with intellectual and developmental disabilities and their families continues to be the focus of the Legacy Project.

Major Capital Projects Completed in 2018:

- Village Children's Homes (4)

Other Projects Completed since 2011:

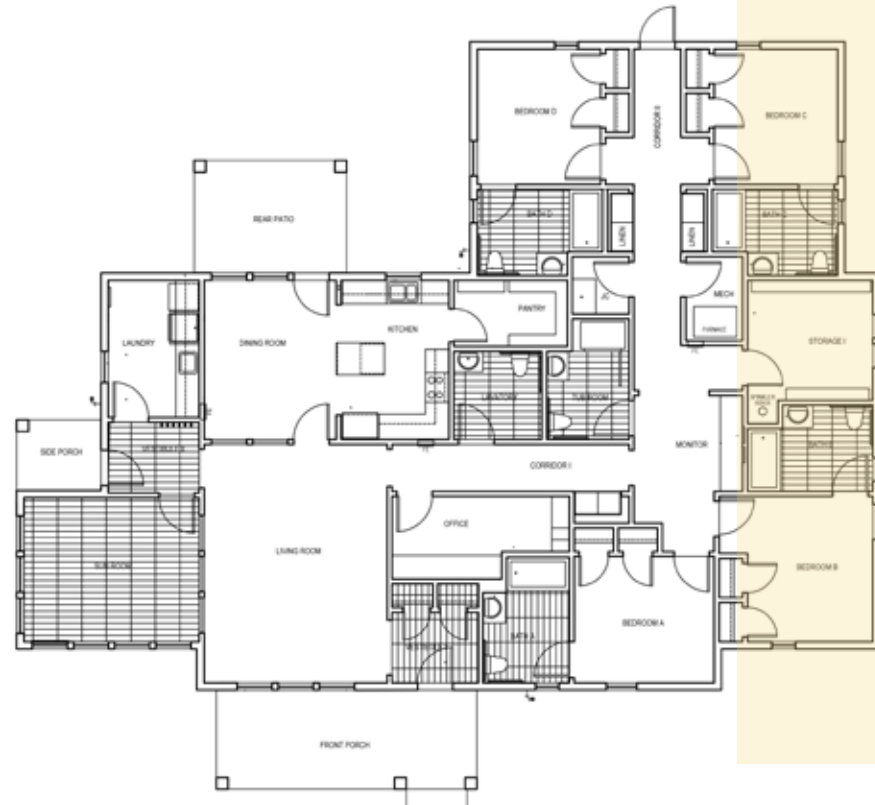
- Family Welcome & Orientation Center, 2011
- Special Needs Playground/Park, 2013
- Fr. Guanella Hall for Assisted Living renovation, 2014
- St. Louis Guanella Village Infrastructure Work, 2017

HELPING TO REALIZE THE VISION: Family and Cottage Homes

SLC's vision, as articulated in its Strategic Plan, is to be an innovative leader in serving individuals with intellectual and developmental disabilities and their families by providing evidence-based programs in an integrated community that promotes the fullness of life.

To help realize a key element of this vision, creating an integrated community, architectural and civil engineering work on Phase II Family and Cottage Homes continued in 2018. Construction documents for the Cottage Homes for adults with I/DD are being prepared, and the Family Homes have reached the advanced design development phase. Additional infrastructure work will need to be completed before these homes are constructed beginning in 2019.

Funds Needed to Build Phase II
of St. Louis Guanella Village:..... **\$12M**



Family Home



Cottage Home



Fitness Center

Traveling in Support of SLC: ART & JOANNE COLE



Art and Joanne Cole, a generous Dixboro area couple who met one another and married after graduating from MIT in the 60s, eventually made their way to Michigan in 1975 to work as civil engineers in the auto industry. Now in retirement from Ford Motor Co., they have fallen in love with ocean cruising.

According to Art, "I soon started my own company doing consulting work in the logistics business for corporations through mathematical modeling." Joanne added, "At the end of 2004, I retired from Ford, became a manufacturer's rep for hand-knitting yarn, and turned my hobby into a good paying job."

Through their faith, Art and Joanne started supporting St. Louis Center around 2004. Art remembered, "We met Fr. Joseph Rinaldo at Old St. Pat's in Whitmore Lake, MI, and when Fr. Joe came out to say Mass,

he would tell us about the work at SLC. We felt that's what God's work is supposed to be." Joanne added, "We began actively supporting SLC at its Fall Auctions. The work there is exactly what we enjoy supporting. It's a marvelous place and we're proud to help."

The Coles are ready to embark on their third Azamara Cruise in 2019. "We decided to go from "New World Portugal – Brazil" to "Old World Portugal – Lisbon," said Joanne. "We worked with Cathy Bilinski to get the plane tickets and we're flying to Rio de Janeiro."

According to Art, "It's just a delight to be on a cruise ship. The crew is fantastic, the food is great, and the staff at the places you go to do a wonderful

job of arranging land tours so you can go see the sites you want to see. Cathy's really good at making the arrangements for us. It's nice to have the trip all bundled up."

The Coles feel that supporting St. Louis Center is a part of their faith.

"They're doing great things for people. You know the residents there feel good about themselves."

"I really appreciate that the Servants of Charity are doing this kind of work around the world, and I'm proud to support them." said Art.





“I hope we can go again. People are already asking for another trip They have all become big supporters of SLC because of their cruise experience.”

-Cathy Bilinski

Cruising for SLC: CATHY BILINSKI

Cathy Bilinski is a woman whose energy knows no bounds and has a deep connection to her Catholic faith and a love for the disadvantaged. She beams when she talks about SLC and observes, “There’s something special going on there, and you can sense that the Holy Spirit is at work. You have no idea how much I love SLC!”

Cathy grew up in Freeland, MI and obtained a graduate teaching degree in Special Education from Central Michigan University. “My first teaching job was in inner city Detroit, and that gave me an understanding of special needs children and how important it is to advocate for them.” After her marriage to Alan in 1987, she devoted her life to raising their five beautiful children.

“Then six years ago I decided to become an entrepreneur, because I wanted to do something fun and enjoyable - traveling,” said Cathy. “So we invested in a travel franchise called Cruise Planners, and I’m now in business with Smart Depart Travel. Both of these franchises have given me the opportunity to help raise funds for SLC.”

In 2015, Cathy was introduced to Norm Neuman and SLC. The first St. Louis Center Dream Cruise became a reality in October of that year. The trip on Azamara Cruise Lines departed from Nice, France, traveled along the west coast of Italy and ended in Athens, Greece. According to Cathy, “We made \$17,500 on the first trip for SLC and couldn’t wait for the next one.” Dream Cruise II took place in September 2018 and was even better. “We went to Fr. Enzo’s hometown and many other places in Italy, where he was our tour guide and interpreter. It was great having him on the trip as our chaplain and guide.”

Dream Cruise II brought in \$30,335 for SLC, and Cathy added, “I hope we can go again. People are already asking for another trip, and many of the people who came are repeat customers for us now. They have all become big supporters of SLC because of their cruise experience. One couple has even put SLC in their will as the primary beneficiary. There’s no denying that God’s hands are involved in all of this.”

The Builder: ANDY SHMINA

Andrew A. Shmina is President of A.Z. Shmina, Inc. in Brighton, MI and provides construction management services for projects throughout Michigan. His company has been passed down through three generations of his family and celebrated its 100th anniversary in 2016.

"Andy" serves as the Chairman of the Community Advisory Council (CAC) of St. Louis Center, having been a member since 2010. He is also the past-president of the Ann Arbor Chapter of Legatus, known as the "Ambassadors for Christ in the Marketplace." Andy learned of St. Louis Center through his friendship with Fr. Fortunato Turati, a Servants of Charity priest and the former chaplain of Ann Arbor Legatus. After joining the CAC, Andy, his wife Lisa and daughter Annie traveled with a group of 50 "pilgrims" to Rome for the canonization of St. Louis Guanella on October 23, 2011 in St. Peter's Square.

Since then, Andy and his construction firm have been instrumental in guiding the renovation of Fr. Guanella Hall and the construction of St. Louis Guanella Village. Andy believes that "God placed us here to proclaim the Gospel message that it's our duty to care for others and to proclaim the dignity of the human person. We are made in the image and likeness of God, and He has placed His imprint in all of us."

"What we do here is a sign of our faith, and the houses we are building here give St. Louis Center residents a sense of dignity and help to lift them up. What we are doing is God's work."



MICHIGAN KNIGHTS SUPPORT ST. LOUIS CENTER

One of the most important benefactors of SLC is the Michigan Knights of Columbus. With over 64,000 members in the State of Michigan, the Knights provide yearly charitable support through their "MI" Drives, or "Tootsie Roll" Drives, that take place on Columbus Day weekend and on Palm Sunday weekend.

As a result of the hard work of the Knights throughout Michigan, the State Council has pledged \$25,000 per year for a ten year period to support the Legacy Campaign. Along with

the contribution of the State Council, nearly 100 individual councils throughout the state of Michigan donate a portion of their MI Drive money to SLC.

"SLC means so much to those with intellectual developmental disabilities, not only to the Chelsea area but to the entire State of Michigan. If not for SLC, many families would struggle to take care of their loved ones," stated State Deputy Bill Chassé.

"The Knights of Columbus are proud to be part of the St. Louis Center community."

"St. Louis Center is a life saving community for many families that have members with intellectual and developmental disabilities."

-William Chassé
State Deputy, MI KofC



THE POWER of Planned Giving

Wills and trusts are a type of planned gift, a charitable contribution that is arranged in the present and allocated at a future date. The foresight and support of people who have named St. Louis Center in their wills or trusts will help to sustain the Center's charitable work for generations to come.

There has been an uptick in planned gifts to St. Louis Center in the past several years. Gifts vary in size and scope, but they all have served the same purpose: to positively impact St. Louis Center's future success. We are very grateful for all of these gifts.

To find out how you can include a gift to St. Louis Center in your estate planning, please contact your financial advisor or Amy Fielder, St. Louis Center Finance Director, at 734.475.8430 or amyf@stlouiscenter.org.

St. Louis Center celebrates all of its supporters, including those who make a mark on its future by including St. Louis Center in their estate plans and through other planned gifts.

YOUR SUPPORT is vital and appreciated

Through your generosity, our work has made a difference in the lives of hundreds of individuals and families across Michigan and beyond.

Your support makes it possible for St. Louis Center to provide the specialized care for the children and adults who reside here and to develop projects that help meet growing needs.

There are many ways to show you care:

Outright Gifts make an immediate impact and are the most common ways of supporting St. Louis Center financially. These gifts include:

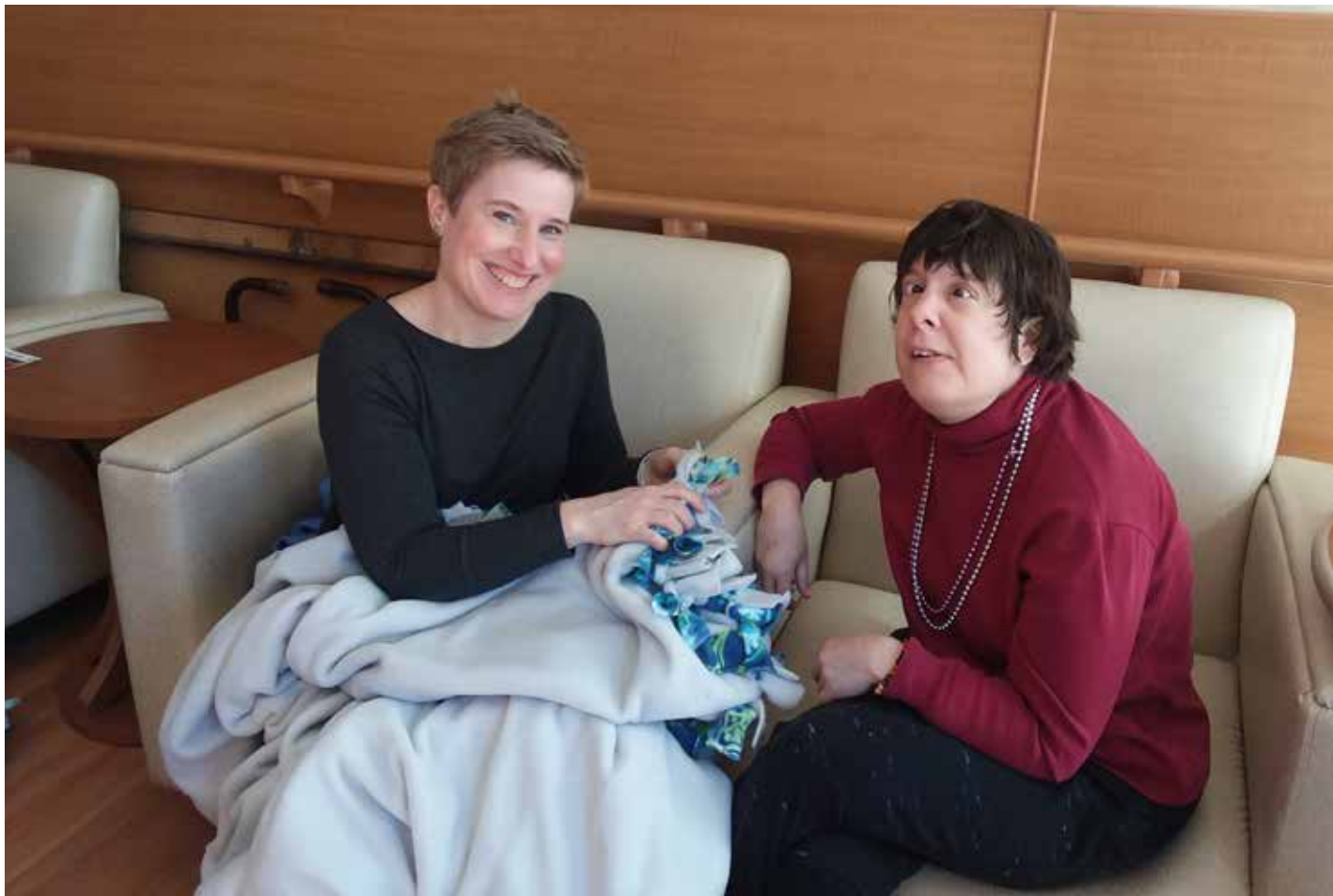
- **Cash Donations** – personal check, credit card authorization, money order or bank draft
- **Gifts of Stock or Securities** – offer a charitable deduction to you, the donor, and eliminate your capital gains tax liability
- **In-Kind Gifts of Goods and Services** – help reduce operating costs

Matching Gifts increase the value of your gift by making use of your company's matching gift program.

Planned Gifts provide financial support to St. Louis Center while potentially providing significant financial benefits to you, the donor. Examples include:

- **Will or Trust** – name St. Louis Center in your will or trust. You can make a significant impact without affecting your current finances.
- **Life Income Gifts** – gifts that name St. Louis Center as a beneficiary while you or your loved ones are paid an income. These can include the Charitable Gift Annuity, Charitable Remainder Trust, or others.
- **IRA, 401(k) beneficiary** – name St. Louis Center as a percentage beneficiary of your retirement plan account. This requires only a simple change of beneficiary form.
- **Life Insurance** – name St. Louis Center as a beneficiary of your fully paid or new life insurance policy.

Neither the author, the publisher nor this institution is engaged in rendering legal or tax advisory service. For advice and assistance in specific cases, the services of an attorney or other professional advisor should be obtained. The purpose of this publication is to provide accurate and authoritative information of a general character only. Watch for tax revisions. State laws govern wills, trusts, and charitable gifts made in a contractual agreement. Advice from legal counsel should be sought when considering these types of gifts.



Creating Community Connections

Chelsea Chicks Care, a group of teens from Beach Middle School and Chelsea High School that has been involved at SLC since 2016, teamed up with the ladies at OLP to make blankets for Faith in Action. Jen Alford, a parent advisor to the group, (left) enjoyed helping Lori finish her project.



16195 Old US-12
Chelsea, MI 48118
tx: 734.475.8430
fx: 734.475.0310

www.stlouiscenter.org



www.facebook.com/stlouiscenter
@St_Louis_Center

Not for Profit
Indicia
PAID
Permit 22
Chelsea MI

COMMUNITY ADVISORY COUNCIL (CAC)

Andrew A. Shmina, <i>Chair</i>	Willard Johnson	Tom Nowatzke
Nancy Graebner, <i>Vice-Chair</i>	William Lamb	Kenneth Unterbrink
Larry Doll, <i>Secretary</i>	George Mallison	Don Walker
Daniel Johnson, <i>Treasurer</i>	Joseph Munie	William Chasse
Owen Ballow	Kathi Neuman	(MI State Deputy, KofC)
Donna Hrozencik, MD	Norm Neuman	



HONORARY CAC MEMBERS

Julie Ballow	Frank Gronhert	Stan Starkey
Marlene Cunningham	Jerry Hammerschmidt	Rev. Dr. William J. Turner
Jerry D'Adamo	Charles H. Koenn	Eleanor Unterbrink
Don Doll	Michael Malinowski	Joseph White
Joseph Elekonich	Thomas Marcetti	Alexander Zangara
Robert Fox	Richard McCloy	Patricia H. Zangara
Paul Frisinger	Gloria G. Miller	Joseph Zilke
Mary F. Galasso	Walter Niemann, DDS	

SERVANTS OF CHARITY AT ST. LOUIS CENTER

Fr. Satheesh Alphonse Caniton	Fr. Fortunato Turati
Fr. Joseph Rinaldo	Fr. Leo Joseph Xavier
Fr. Enzo Addari	Fr. Franklin Michael
Fr. David Stawasz	Fr. Amal Rayapillai