

St. Louis Center Annual Report



*“The promotion of
the whole person,
according to each
one’s capabilities, is
the main objective
of our work.”*

– Blessed Louis Guanella

St. Louis Center
16195 Old US 12
Chelsea, MI 48118
tel: 734.475.8430
www.stlouiscenter.org

Mission

St. Louis Center has been serving the needs of persons with intellectual developmental disabilities and their families since 1960, when the Servants of Charity Congregation of Italy came to America to operate the "St. Louis School for Boys" in Chelsea, MI. Today, it is a modern program caring for boys, men and women. Each resident has his/her own person centered plan, and each person is treated as a unique individual.

The mission of St. Louis Center is to be "A caring residential family, living and learning environment providing for the physical, emotional, and spiritual needs of children and adults with developmental disabilities." The Servants of Charity strive to provide the best possible quality of life for their residents, and the Community Housing Program of St. Louis Center has been accredited by the Commission for Accreditation of Rehabilitation Facilities, (CARF) since July 2006.

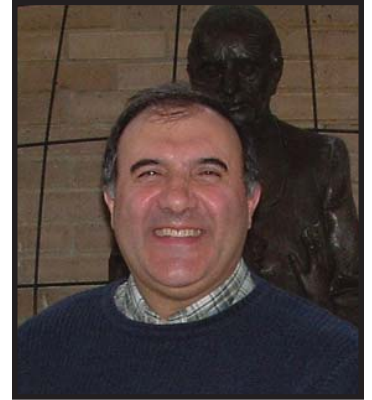
The Servants of Charity continue to maintain their Guanellian spiritual mission by "The presence of continuous thanksgiving to the Lord, through our life, words and mutual commitment... as the best evidence that the plan of God is being realized..."



Message from the Administrator

Dear Friends,

It's no secret that this past year has been one of the worst economic years in recent memory and revenues fell shorter than expenses. However, this shortfall was made up from in-kind donations received throughout the year. We continue to discover creative new ways to raise funds for our program and we are blessed by the love of many generous people month after month and year after year.



Through the providence of God and the help of many friends, we've achieved an increase in the per diem rates paid by the State of Michigan for state placed residents. We've also received assistance from an anonymous – but very generous – foundation, several generous bequests, and added additional fundraisers and supporters to assist us in our endeavors. The Knights of Columbus in Michigan are particularly generous to us on an annual basis, while other organizations such as the Italian American Club of Livonia, the Alhambra and several local Catholic and Christian churches reach out to us with compassion and love.

As we look toward the future, we continue to stress the importance of using "best practices" in our industry by implementing CARF standards in our organization, and we are conducting a community outreach program with surrounding county service providers and our local public schools. Professional development of our direct care employees is a continuing need that we've addressed by hiring a full-time training coordinator, and we've recently addressed some major infrastructure needs by replacing windows and re-surfacing our parking lots.

Most importantly, the central element of the Guanellian charism is a "family spirit" and hence money can't buy the special love, stability, and structure that we strive to provide for our residents here at St. Louis Center. Fr. Guanella's educational system stresses that a Guanellian House should transmit warmth and the sense of acceptance that one receives from their family. May our Lord Jesus Christ continue to watch over us and guide us as we continue our mission of caring for His "special children" with love, warmth, and family understanding.

Sincerely,

A handwritten signature in black ink that reads "Fr. Enzo Addari". The signature is written in a cursive, flowing style.

Fr. Enzo Addari, SdC
St. Louis Center Administrator

Who Are the Servants of Charity?

The Servants of Charity is a worldwide congregation of Catholic priests and brothers founded in Italy in 1908, whose mission is to care for the poorest of the poor.

They are most concerned with children and youth who are materially and morally abandoned; the elderly who, deprived of all other human support, have no way to continue alone; persons with intellectual developmental disabilities, whom their tradition calls "good children," and those who have inadequate care. The Congregation devotes itself to caring for people physically and spiritually, combining the ministry of evangelization with active expressions of aid to the poor. By dedicating themselves entirely to the fulfillment of this mission, the Servants of Charity find their way to sanctification.

2008-2009: Celebrating 100 Years of Service and Grace

On March 24, 1908, Blessed Fr. Louis Guanella accepted the public profession of the first members of his Servants of Charity Congregation. His message was simple: "Give bread and the Lord," he said to his Religious sons. This Centennial year renewed the congregation's commitment to return to the origin of the gift of the Holy Spirit in the heart of Fr. Guanella, restoring their conviction and enthusiasm in the will of God to care for the needy and abandoned among us. Fr. Guanella was beatified by Pope Paul VI in 1964.

Community Advisory Council

The St. Louis Center Community Advisory Council was established by the Board of Directors to aid in carrying out their mission of caring for our special population of residents. The Council meets on a monthly basis on the 2nd Tuesday, and serves in many different capacities. This includes fundraising, community outreach, advocacy, budgeting, and strategic planning to name a few.

There are seventeen members on the Council, and this diverse group comes from the worlds of finance, health care, aviation, law, politics, technology, professional sports, sales, the building trades, and the automotive industry. The State Deputy of the Michigan Knights of Columbus is a standing member of the Council as an ex-officio member.

2008-2009 CAC Members

Larry Doll, <i>Chair</i>	Julie Ballow	John R. "Bob" Moody, <i>K of C State Deputy</i>
Frank Grohnert, <i>Vice-Chair</i>	Jerry D'Adamo	Kathi Neuman
Paul Frisinger, <i>Secretary</i>	Tom Forbes	Norm Neuman
Marlene Cunningham, <i>Treasurer</i>	Bob Gorse	Tom Nowatzke
	Willard Johnson	Tim Patton
	Brian Kennedy, M.D.	Kenneth Unterbrink
	George Mallison	

St. Louis Center Servants of Charity



Fr. Joseph Rinaldo, SdC
Provincial Treasurer



Fr. Fortunato Turati, SdC
Community Superior



Fr. Enzo Addari, SdC
Administrator



Fr. David Stawasz, SdC
Assistant Administrator



Fr. Satheesh Alphonse, SdC
Assistant Administrator

St. Louis Center

St. Louis Center Timeline

- **1960's:** Servants of Charity open St. Louis Center with four priests, four sisters, one cook, five teachers, and sixty eager young boys.
- **1970's:** Facility expansion and improvements include separate dormitory rooms, living rooms, administrative wing, and a chapel.
- **1980's:** Residents are mainstreamed into local public schools, and St. Joseph Hall and Fr. Guanella Hall are added to the complex.
- **1990's:** Reduction in funding for non-profits creates need for more aggressive fundraising. Several important fundraisers established that are still in place today.
- **2000's:** Decade of change and improvement as the "Snoezelen Therapy Room" is built, women's program begins, and infrastructure is upgraded.



- 1) Parent and committee member Rey Patino shows off his Hog at Blessing of the Bikes.
- 2) Resident "Jason" celebrates winning a raffle drawing with sister Kelly at the Top Dog golf outing.
- 3) Fr. Enzo poses with members of the Michigan Knights of Columbus State Council after receiving a \$20,000 check at the Fall Dinner Auction.
- 4) Residents "Tara" and "Lori" enjoy dancing at the Recognition Dinner Dance.
- 5) The Chef from Station 885 in Plymouth shows off his smoked salmon creation at the Italian American Club of Livonia.

2008: A Year in Review



6) Workers from Nagle Paving apply the first coat of asphalt to the new parking lot.

7) 4th Degree Knight Bob Gorse stands at attention next to residents during Chapel ceremonies.

8) Council member Gorse enjoys the company of residents "Brian", "Lee", and "Tyler" during the K of C Summer Picnic.

9) Fr. Enzo takes Very Rev. Fr. Alfonso Crippa, Superior General of the Servants of Charity, on a tour during his May visit.

10) "Lee" and "Chris" have fun at the Lesser Farms Pumpkin Patch in October.

11) "Sherry", "Lisa", and "Julian" enjoy morning crafts during the Day Program.

12) "Martha" helps "Lisa" wash dishes during a recent training session.

13) Pistons play-by-play announcer George Blaha thanks supporters, as celebrity chair of the Golf and Glory Outing.

Financial Report

Fiscal Year July 1, 2007 - June 30, 2008

St. Louis Center's operating costs in 2008 were \$2.8 million. Following is a category breakdown.

Income Categories

Agency Payments: State and County agency payments to care for residents

Contributions and Grants: donor and foundation grants that support the Center

Fundraising Events: revenue support for residents without agency payments

Other: miscellaneous types of contributions not fitting the above categories

Expense Categories

Staff Costs: employee salaries and benefits

Services and Programs: direct services to our residents

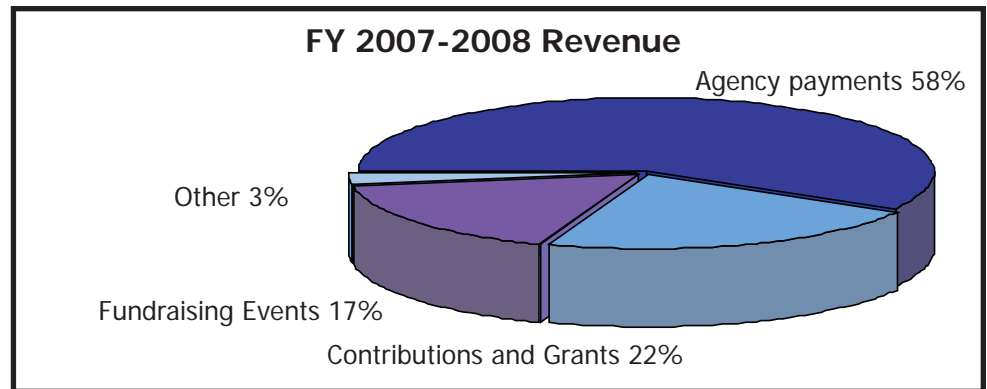
Facilities and Transportation: building, grounds, and vehicle costs

Fundraising Projects: capital outlays for fundraising efforts

Depreciation: percent reduction of real property value

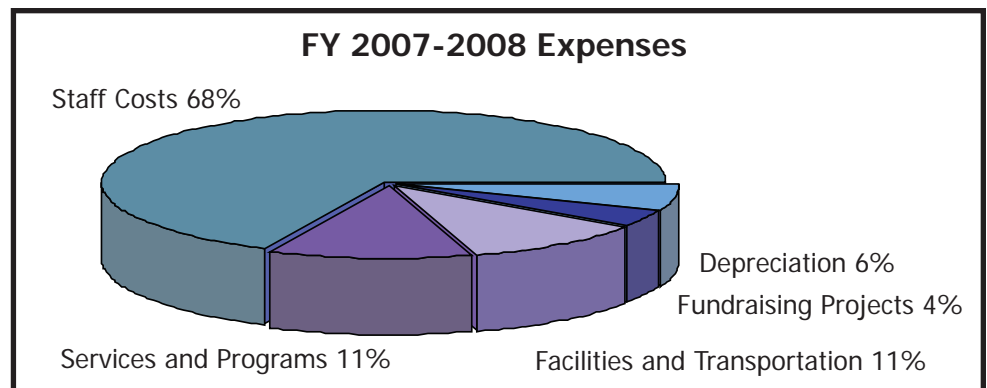
Funding Sources*

	Amount	Percentages
Agency payments [†]	\$1,599,869	58%
Contributions and Grants	\$614,251	22%
Fundraising Events	\$463,631	17%
Other	\$70,096	3%
Total	\$2,747,847	100%



Expenses*

	Amount	Percentages
Staff costs	\$1,926,947	68%
Services and Programs	\$323,914	11%
Facilities and Transportation	\$299,977	11%
Fundraising Projects	\$111,519	4%
Depreciation	\$165,121	6%
Total	\$2,827,478	100%



* Figures are based on audited financial statements and do not include in-kind contributions.

[†] Special one-on-one care adds to agency costs.

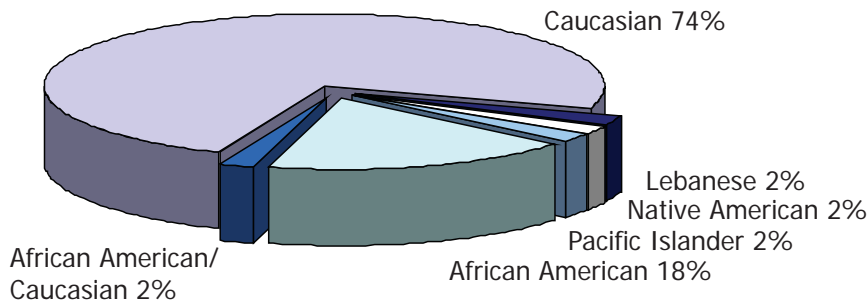
Demographic Report

January 1, 2008 - December 31, 2008

At the end of 2008, St. Louis Center had 50 residents, 16 of whom were children and 34 adults. 50 percent of all residents were privately placed. Another 38 percent came from county departments of human services and 12 percent were foster placements from the State of Michigan. Many of our privately placed residents are charity cases who have no other families outside of St. Louis Center.

Residents on January 1, 2008		Origin		
New admissions	10			
Returned to family	2			
Placed in other treatment facility or AFC	5	Private	25	50%
Placed in foster home	2	County Agency	19	38%
Moved to semi-independent home	1	State	6	12%
Residents on December 31, 2008	50	Total	50	100%

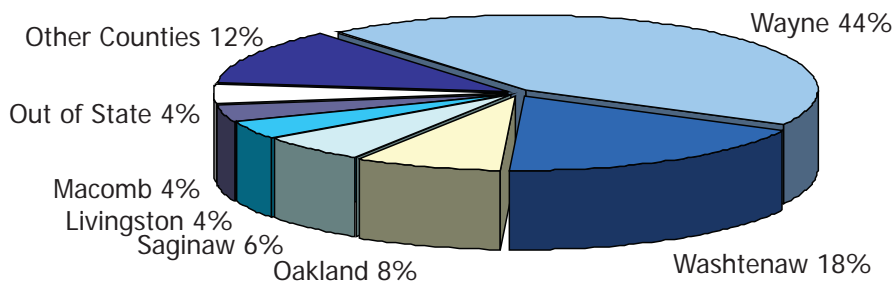
Residents by Race



St. Louis Center does not discriminate in accepting residents on the basis of race, religion, national origin, color or sex. 74 percent of our residents are white, 18 percent are black, and the rest are of mixed origin. We have 8 women, 26 men and 16 boys.

The largest number of our residents come from the Wayne County/Detroit area (44 percent) and 18 percent come from our home county of Washtenaw. Another 8 percent come from Oakland County, 4 percent from out of state, and the rest from the counties of Saginaw, Macomb, Marquette, Livingston, Kent, Kalamazoo, Jackson, Ingham, and Genesee.

County of Origin



County of Origin

County of Origin	Number
Wayne	22
Washtenaw	9
Oakland	4
Saginaw	3
Out of State	2
Macomb	2
Livingston	2
Marquette	1
Kent	1
Kalamazoo	1
Jackson	1
Ingham	1
Genesee	1

Giving Opportunities

Please help St. Louis Center in our mission to care for persons with intellectual development disabilities. See our website for more information at www.stlouiscenter.org.

Capital Needs

After 50 years of operation the needs of St. Louis Center have grown. Our residential programs and staffing needs have increased, and our dollars are stretched to the limit. Although we maintain and update our facility as best we can, enhancements are being planned for the future as funds become available (See website).

Cash Donations

St. Louis Center relies on cash donations from its benefactors for a percentage of its operational costs. If you would like to support St. Louis Center financially with a cash donation, please mail your checks to the address below. Thank you for your support!

In-kind Donations

The residents of St. Louis Center have many daily recurring needs, and providing these needs is a very costly part of our budget. "In-kind" donations help to defray these costs. Anyone having access to large amounts of these items that would like to make donations can find an itemized list on our web site.

Planned Giving

St. Louis Center is dedicated to serving those in need, even if funding is not readily available to cover the costs of their care. Because of this, we must raise \$1 million every year to maintain our operation. We need your help to build an endowment fund to help

us serve our residents. By planning your major gift today, you can help yourself and your heirs while benefitting the residents of St. Louis Center for years to come.

Charitable Asset Planning Methods

Some of the giving methods used to distribute accumulated assets are as follows:

1. Bequests by Will or distribution from revocable trust
2. Life Insurance & Wealth Replacement Trusts
3. Life Income Plans
4. Charitable Remainder Unitrusts & Charitable Remainder Annuity Trusts
5. Charitable Gift Annuity
6. Pooled Income Fund
7. Charitable Life Estate
8. Distribution from a qualified retirement plan
9. Charitable Lead Trust
10. Endowment

Our endowment is managed by an independent Board of Directors, with the goal of preserving capital and optimizing return to St. Louis Center. Gifts can be made to the fund through direct contributions, stock or securities, retirement funds, annuities, estates, and many other asset vehicles. Please contact our Administrator or Finance Director through our web site for more information on our endowment fund.

St. Louis Center ~ 16195 Old US 12 ~ Chelsea, MI 48118 ~ tel: 734.475.8430 ~ fax: 734.475.0310
www.stlouiscenter.org

Special Thanks

Due to the large volume of gifts we received throughout the year, it is impossible to thank everyone in this limited space; however we want you all to know how loved and appreciated you are. Several organizations, parishes, and individuals will be thanked here and they are:

Italian American Club of Livonia
Michigan Knights of Columbus
Order of Alhambra
SLC Community Advisory Council

St. Andrew, Saline
St. Joseph, Irish Hills
St. Mary, Chelsea
St. Joseph, Dexter

Michael Chirco and Joe Maniaci
Joe and Zoja Bojovic
Richard Ellison and Sheila Fitzgibbons
Jack Tocco Family